

Material word cards

Instructions: Cut into individual cards and use to support thinking, discussions and recording.

plastic



Cohdra, *Straws1*

<http://www.morguefile.com/archive/display/28143>

wood



Bhjoco, *DSCF0057*

<http://www.morguefile.com/archive/display/850465>

glass



Jusben, *Dsc04531_r*

<http://mrg.bz/y4Ew4x>

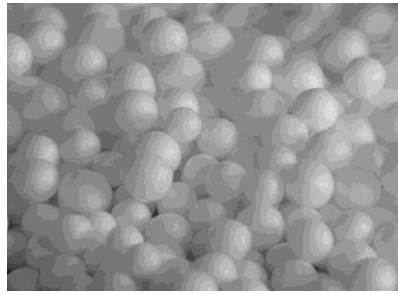
metal



Krosseel, *eee37*

<http://mrg.bz/wlPlPe>

polystyrene



Sei, *Styroplan* <http://commons.wikimedia.org/wiki/File:File%3AStyroplan.jpg>
CC-BY-SA 3.0 Unported, creativecommons.org/licenses/by-sa/3.0/deed.en

straw



Jdurham, *aafieldtrip 010a*
<http://mrg.bz/c0FPqd>

aluminium



Cohdra, *100_4019*
<http://mrg.bz/l24JDS>

paper



Cohdra, *100_8654*
<http://mrg.bz/Qumw5g>

ceramic



Wax115, *Kitchen_tools_11*
<http://mrg.bz/HojANi>

fabric



Jusben, *Arnhem market Sep 20 2013 (3)*
<http://mrq.bz/qG2yep>

cardboard



Cohdra, *100_3540*
<http://mrq.bz/7QWDoD>

rubber



DuBoix, *m4h9a2 025*
<http://mrq.bz/Wx1pcU>

brick



Alvimann, *Texture_-_bricks_1*
<http://mrq.bz/lequ2V>

stone



Pickle, *IMG6282*
<http://mrq.bz/BDvXAU>

wool



Beglib, *Needle ready*
<http://mrq.bz/M5ZmNH>

cotton wool



Jeltovski, *mf88*
<http://mrq.bz/2EFntU>